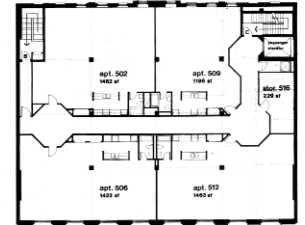




Before



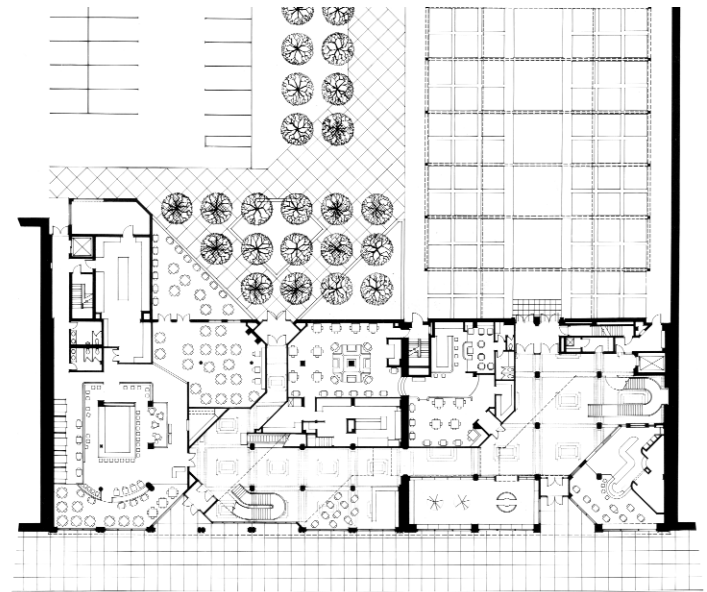
After



5



HAMILTON
HOUSTON
LOWNIE



THEATER PLACE

Buffalo, New York

HAMILTON HOUSTON LOWNIE Architects developed an adaptive reuse design of these two adjacent historic Main Street buildings. This was one of the first mixed-use projects in Downtown Buffalo, to initiate the revitalization effort of the Theater District. The design incorporated a multi-level central atrium for circulation and borrowed daylight. Included in the facility were restaurants, night clubs, commercial offices, and upper level loft housing units. The ground level connected to the adjacent historic Shea's Buffalo Theater, enabling the ticket office to be relocated to the Theater Place lobby, thereby freeing up space in the theater lobby.

<i>Project Size:</i>	100,000 sf
<i>Project Cost:</i>	NA
<i>Complete:</i>	1982
<i>Clients:</i>	The City of Buffalo, American City Corp., Theater Place Associates
<i>Reference:</i>	Mr. Alan Dewart
<i>Telephone:</i>	(716) 845-6643
<i>Awards:</i>	1986-AIA Buffalo/WNY